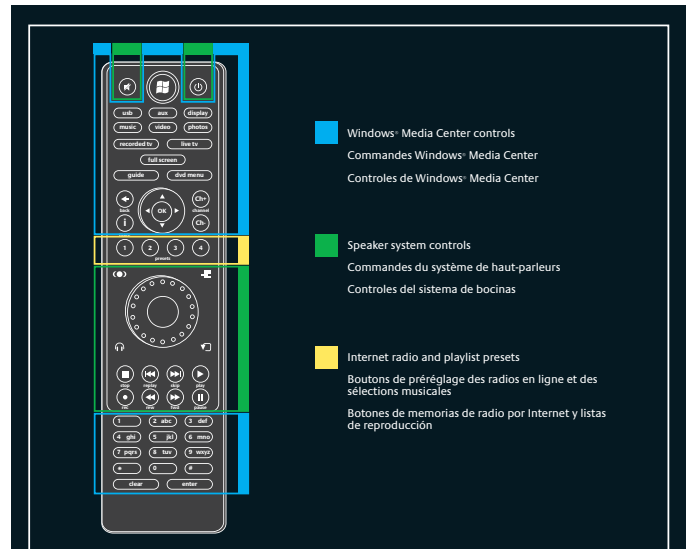


SRS® TruSurround HD™ delivers the excitement of surround sound without the need for rear speakers. SRS® TruSurround HD™ creates a broad sweet spot around the listener for maximum realism and enjoyment, while providing dialog enhancement in the center channel image to ensure clear and intelligible vocals.

- = front channel audio image
- = surround sound image
- = center channel image with dialog enhancement



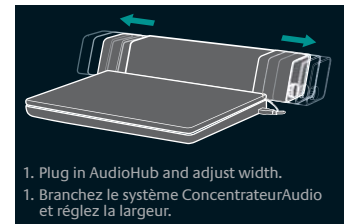
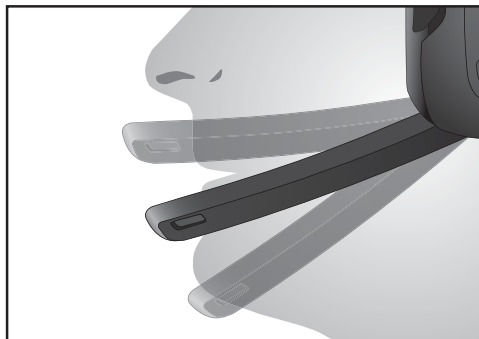
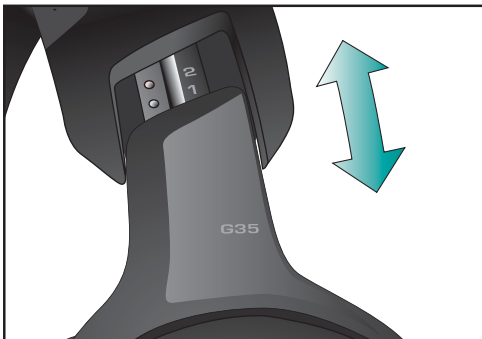
■ Windows® Media Center controls  
Commandes Windows® Media Center  
Controles de Windows® Media Center

■ Speaker system controls  
Commandes du système de haut-parleurs  
Controles del sistema de bocinas

■ Internet radio and playlist presets  
Boutons de pré-réglage des radios en ligne et des sélections musicales  
Botones de memorías de radio por Internet y listas de reproducción

The advanced remote includes fully-integrated Windows® Media Center controls, as well as complete control of the speaker system. Four convenient presets let you quickly save and recall your favorite Internet radio stations and playlists.

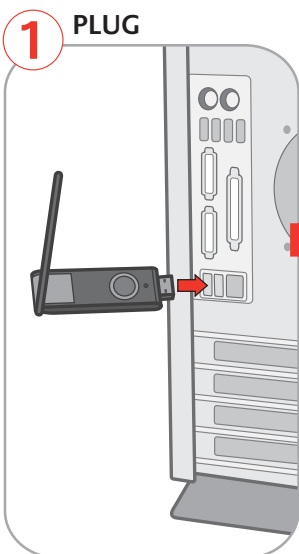
- = Windows® Media Center controls
- = Speaker system controls
- = Internet radio and playlist preset buttons



1. Plug in AudioHub and adjust width.  
1. Branchez le système ConcentrateurAudio et réglez la largeur.

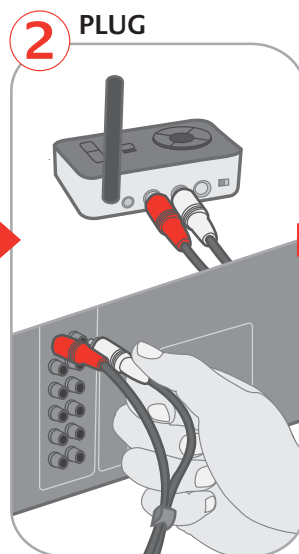


2. Plug in USB accessories.  
2. Branchez les accessoires USB.



1 PLUG

Plug the USB music transmitter into a USB port on your PC.



2 PLUG

Plug the music receiver into your stereo system.



3 PLAY

From your PC, open your favorite playlist and press play.